

No. 225

Date 9/18/89

*Another addition to the expanding line of Webb products.*

# NEW PRODUCT BULLETIN

PART NUMBER: **63435**

BRAKE DRUM

SIZE: **16.50 × 5.00**

**AVAILABLE**  
**NOW**

ESTIMATED WEIGHT: **79 Lbs.**

SERVICE RATING

STANDARD DUTY \_\_\_\_\_

HEAVY DUTY  X

EXTRA HEAVY DUTY \_\_\_\_\_

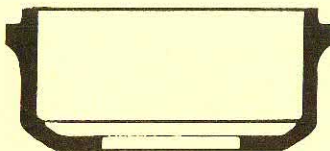
**APPLICATION INFORMATION**

**FA-329 and FA-339  
AXLES**

## DIMENSIONAL INFORMATION

BRAKE SURFACE DIAMETER	OVER ALL DEPTH	BRAKE SURFACE FLAT	PILOT DIAMETER	BOLT CIRCLE	BOLT HOLES	
					NUMBER	SIZE
16.50	6.25	5.31	9.18	11.25	5	.78

TYPE  G



**DRUM CONFIGURATION**

### INTERCHANGE INFORMATION

<u>MANUFACTURER</u>	<u>PART NUMBER</u>
Navistar	1648512-C1
Dayton	122960

INTERCHANGE INFORMATION SHOWN ABOVE IS BASED ON INFORMATION AVAILABLE AT TIME OF PUBLICATION, PORTIONS OF WHICH WERE OBTAINED FROM UNCONFIRMED SOURCES. THEREFORE ACCURACY OF INTERCHANGE INFORMATION CANNOT BE ASSURED.

**WEBB WHEEL PRODUCTS, INC.**  
2310 Industrial Drive, S.W.  
Cullman, Alabama 35055  
(205) 739-6660  
FAX: 205-739-6246